

Used Lattice Boom Crane

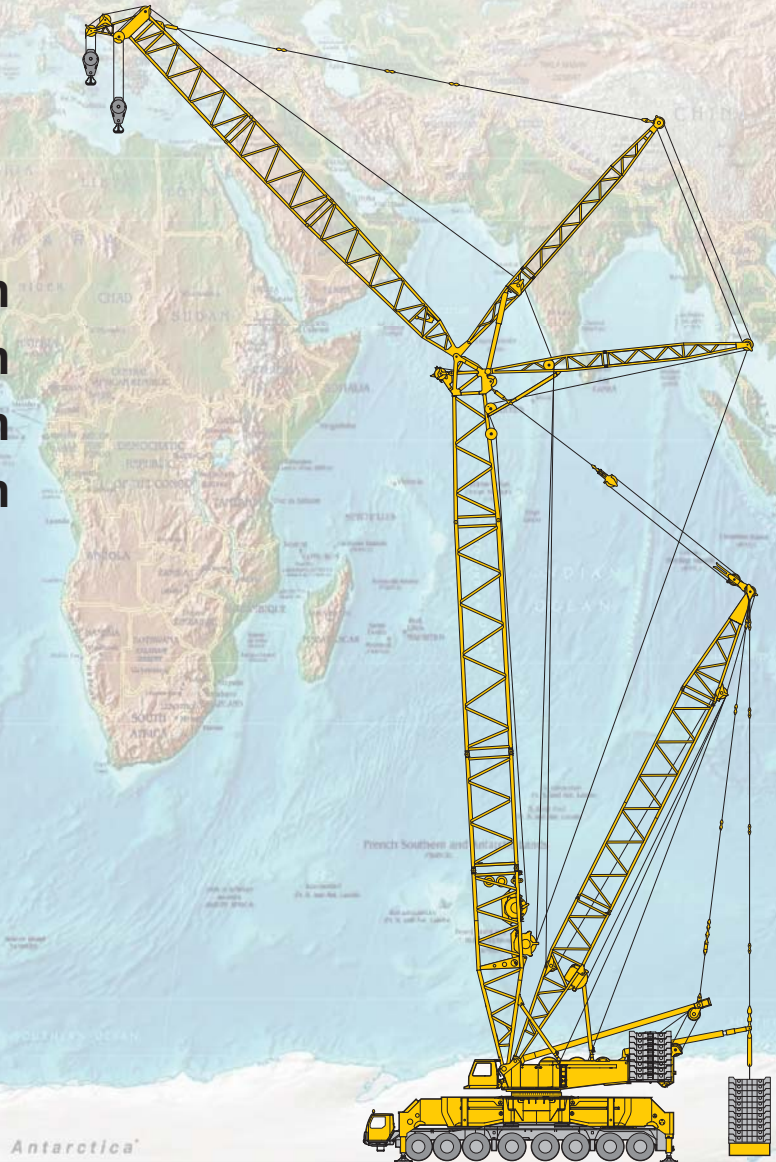
LG 1750

Year 2006

| | |
|----------------|--------|
| Main boom SL | 105m |
| Main boom SL7 | 147m |
| Main boom SL8 | 115,5m |
| Derrick Mast D | 31,5m |

Special windmill jib HS
Ballast tray incl. full cwt
Crane mats + Telma

Chassis: 16.084 km, 1.112 h
Crane operation: 4.554 h



San Sebastian, Spain
on short notice

SN 073734, Code 15404

LIEBHERR

MAIN DATA

| | |
|---------------------------------------------|----------------------------|
| Manufacturer crane / chassis | Liebherr / Liebherr |
| Model / Type of crane | LG 1750 / TL |
| Max. Capacity (75 %) / max. loadmoment (tm) | 750,00 t at 7,00 m / tm |
| Serial no. / Chassis no. | 073734 / W098780007EL05005 |
| Year / First taken into operation | 2006 / 02.05.2006 |
| Location / Availability 'as-is' | E-Arama / |

DATA TRUCK CHASSIS

| | |
|------------------------------|----------------------------------|
| Truck chassis type / Width | UGM 780 / 3,00 m |
| Carrier cabin | wide |
| Engine (make/type) / hp / kW | Liebherr D 9408 TI-E / 598 / 440 |
| Gearbox manufacturer / Type | ZF / AG / TC-Tronic |
| Crane drivable from | below |
| Eddy current brake | Telma type |
| Drive and steering | 16 x 8 x 16 / 1/2/3/4/5/6/7/8. |
| Type of axle suspension | Niveumatic |
| Size of wheels | 18.00 R 25 |
| Sparewheel | 1 |
| Controlled from support | left, right |
| Support basis L/B | 16,007 x 16,007 m |
| TÜV / SP-acceptance validity | n.v. / n.v. |
| Mileage / Working hours | 16.084 km / 1.112 h / 12.07.2011 |

DATA SUPERSTRUCTURE

| | |
|------------------------------|-------------------------------------|
| Main boom „S“ | „SL8HS“ 70 - 115,5 m |
| Main boom „S“ | „SL7DHS“ 105 - 147 m |
| Main boom „S“ | „SLDB“ 112 m |
| Derrick boom „D“ | 31,5 m |
| Counterweight frame „B“ | inkl. 387,5 t |
| Variable equipment | SL7DHS / SLDB / SL / SL8HS |
| No. of winches | 4 |
| Winch 1 cable pull / cable Ø | 160 kN / 28 mm |
| Winch 2 cable pull / cable Ø | 160 kN / 28 mm |
| Winch 3 cable pull / cable Ø | 160 kN / 28 mm |
| Winch 4 cable pull / cable Ø | 2x 160 kN / 28 mm |
| Engine (make/type) / hp / kW | Liebherr D 9408 TI-E A4 / 544 / 400 |
| Superstructure counterweight | 220 t |
| No. of slewing gears | 2 |
| Hookblocks / Crane hook (t) | 400 - 200 t (2x 7 Rollen) / 107 t |
| Mobile pin pulling device | existing / available |
| Safe load indicator | Liebherr LICCON / 75% |
| UVV-acceptance validity | n.v. |
| Working hours crane | 4.554 h / 12.07.2011 |

OTHER FEATURES

| | |
|--------------------|------------------------------------------------------------------------------------------------------------------------------------------------------------------------------------------------------------------------------------------------------------------------------------------------------------------------------------------------------------------------------------------|
| Additional heating | Carrier cabin and crane cabin |
| Air condition | Carrier cabin and crane cabin |
| Arrestor | Chassis |
| Additional | S-intermediate section 14 m with supporting point, whip line (HS) 120 t with pulleys incl. adapter 7,6 m (SL) for whip line extension 120 t, preparation for 5th winch, lifting means for superstructure assembly with one auxiliary crane, camera observation for winch 3, camera for reverse drive at carrier, cantilever assembly S- and SL-system, flight warning light (flashlight) |

Used Crane

TYPE: LIEBHERR LATTICE BOOM CRANE LG 1750
S/N: 073734
Code: 15404

EXW Delivery: 05/2006

SCOPE OF SUPPLY

10 Basic machine

WORKING EQUIPMENT

MAIN BOOM SL

981 Main boom SL8HS – 112 m
981 Extension main boom SL8HS to SL7DHS 147 m
981 Extension main boom SL8HS 112 m to SL 105 m / SLDB 105 m
L-head 400 t

DERRICK SYSTEM D

System 2421

incl. pulley block, fall-back prevention cylinders, guy rods
and catwalks (additionally winch III is required)

140 Derrick system D length 31,5 m

COUNTERWEIGHT FRAME B

**for max. derrick counterweight of 400 t
at max. radius of 20 m**

Counterweight frame with guiding frame
for infinitely variable radii from 13 - 18 m resp. 15 - 20 m
Counterweight frame, dead weight approx. 12,5 t
Hydraulic telescopic guiding frame
Hydraulic compensation cylinders
Guy rods: counterweight frame - derrick mast
1 additional slewing gear at superstructure
(without counterweight plates)

145 Counterweight frame with guiding frame

147 Counterweight plates 387,5 t for total derrick counterweight of 400 t

WINCHES

141 Winch III - derricking main boom / D-operation
215 Winch II - hoist gear

HOOK BLOCKS

235 Hookblock 400 t / 200 t - 2 x 7 sheaves
240 Hookblock 107 t - 3 sheaves

COUNTERWEIGHT

601 Extension for superstructure
662 Additional counterweight 225 t - for total 245 t

SPECIAL INTERMEDIATE SECTIONS FOR CANTILEVER ASSEMBLY

(in exchange to standard section)

280 S-intermediate section 14 m with supporting point

ADDITIONAL EQUIPMENT CRANE CARRIER

| | |
|-----|-----------------------------------------|
| 329 | Crane mats - 4 units - 2,4 m x 6,0 m |
| 400 | Air condition for carrier cabin |
| 410 | Eddy-current brake type TELMA |
| 420 | Spare wheel 18.0 R 25 - without support |

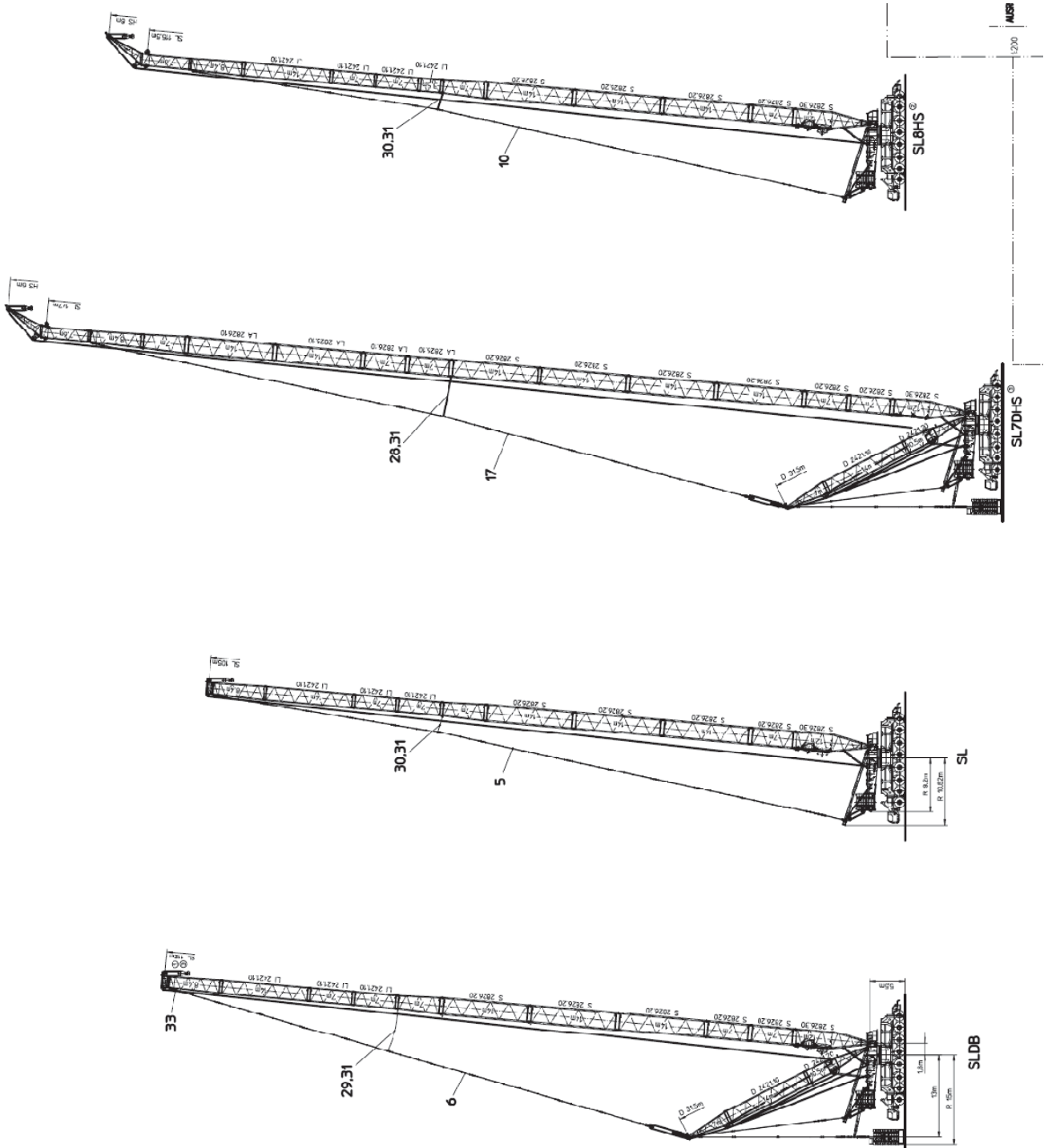
ADDITIONAL EQUIPMENT SUPERSTRUCTURE

| | |
|-----|--------------------------------------------------------------------|
| 620 | Air condition in crane cabin |
| 650 | Pin pulling device |
| 845 | Lifting means for superstructure assembly with one auxiliary crane |

PAINTING / LETTERING

- As is -

Delivered configurations





LIEBHERR

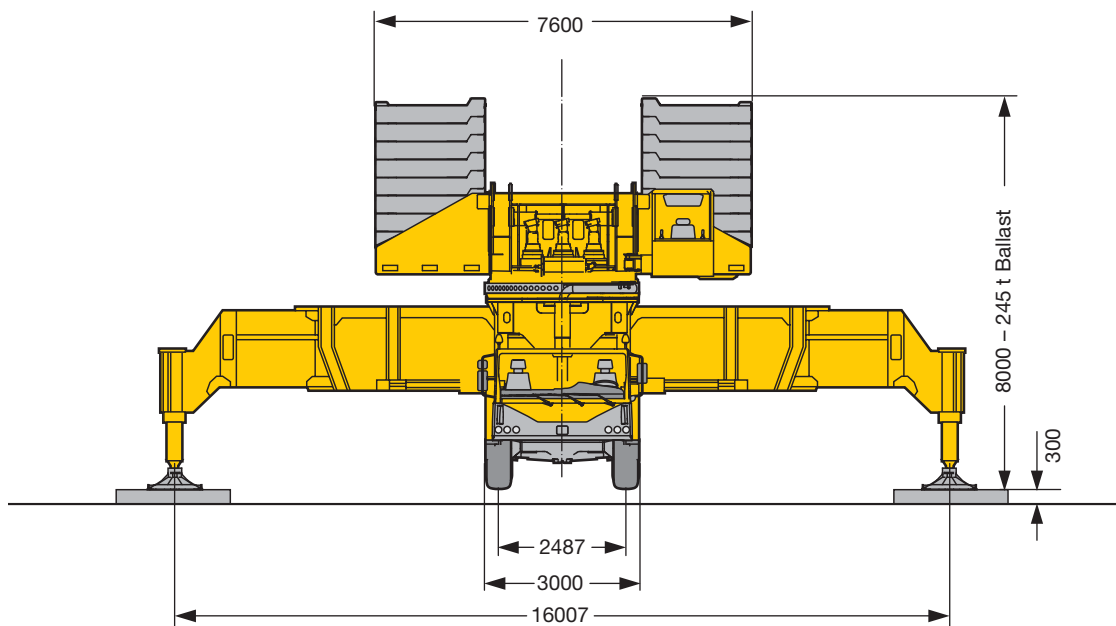
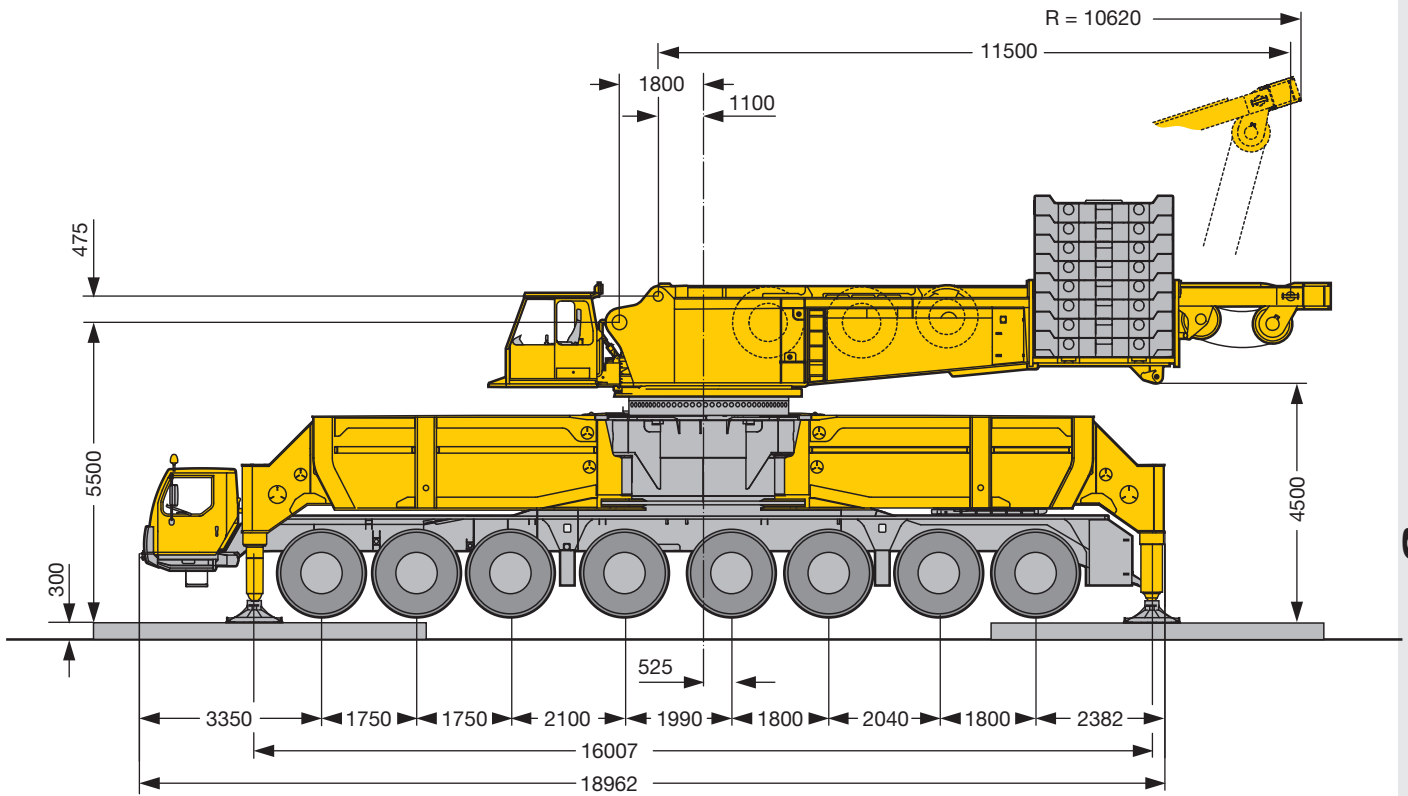


SN 073734, Code 15404

LIEBHERR



Dimensions LG 1750

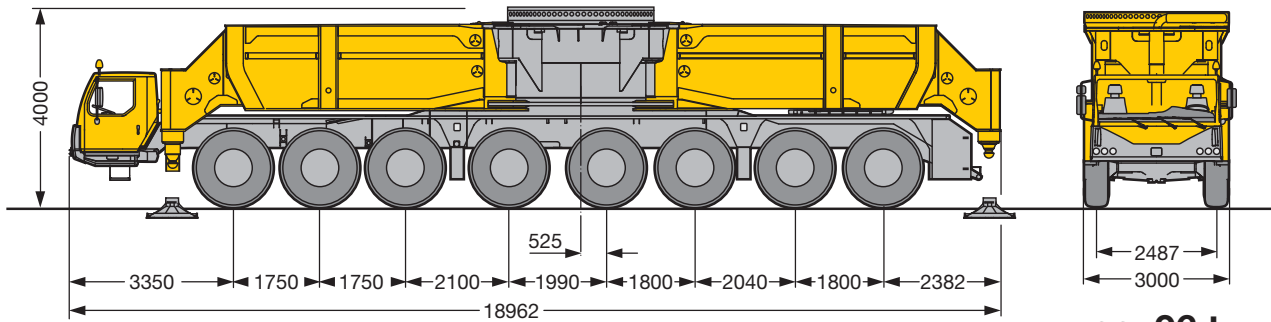


general information

S1575.01

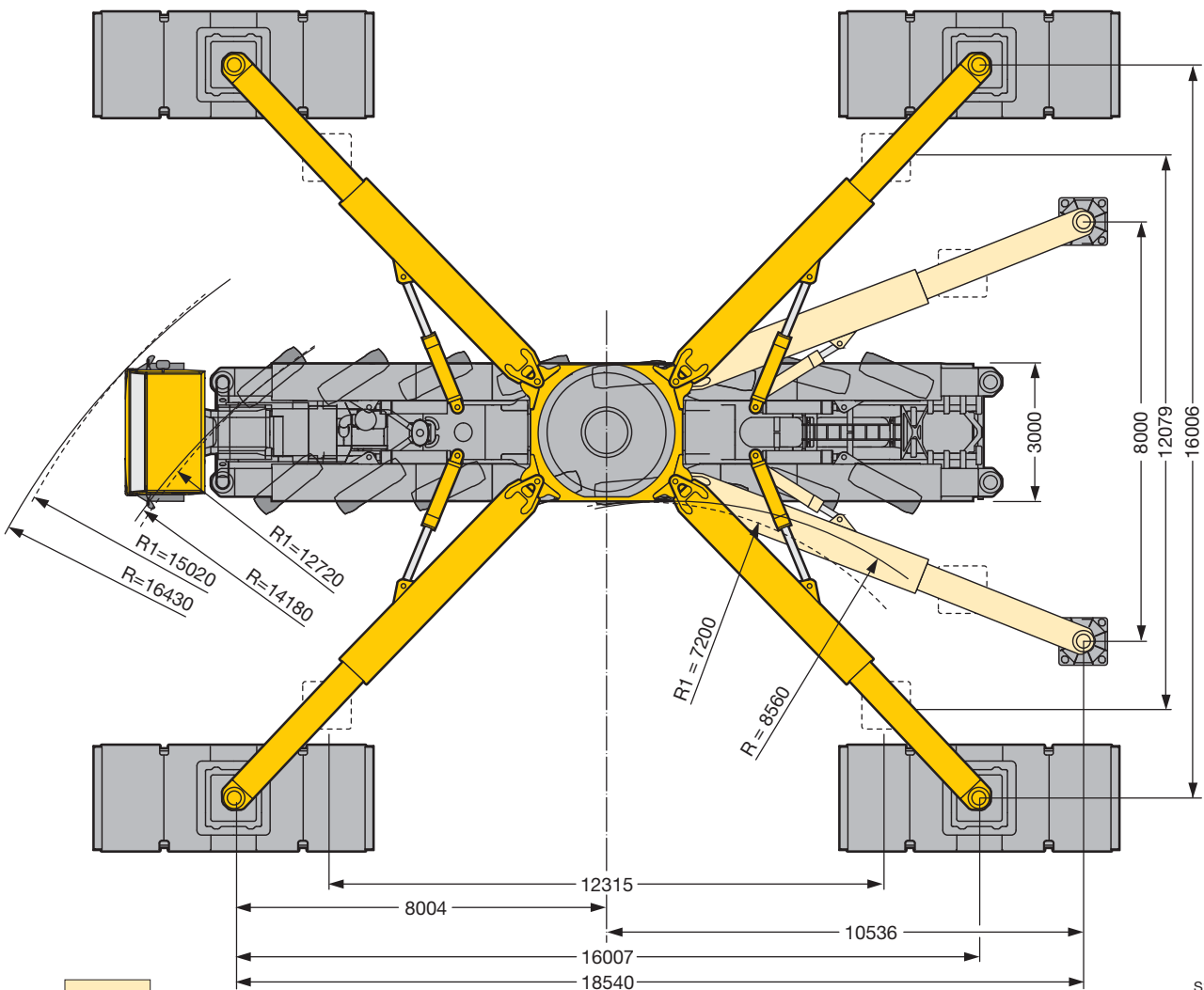
LIEBHERR

Dimensions LG 1750



ca. 96 t

Bei Straßenfahrt hintere Klappholme 300 mm ausgefahren.
 On-road travel rear outriggers 300 mm extended.
 Pour déplacement sur route sortir les poutres de calage arrière de 300 mm.



S1325.01

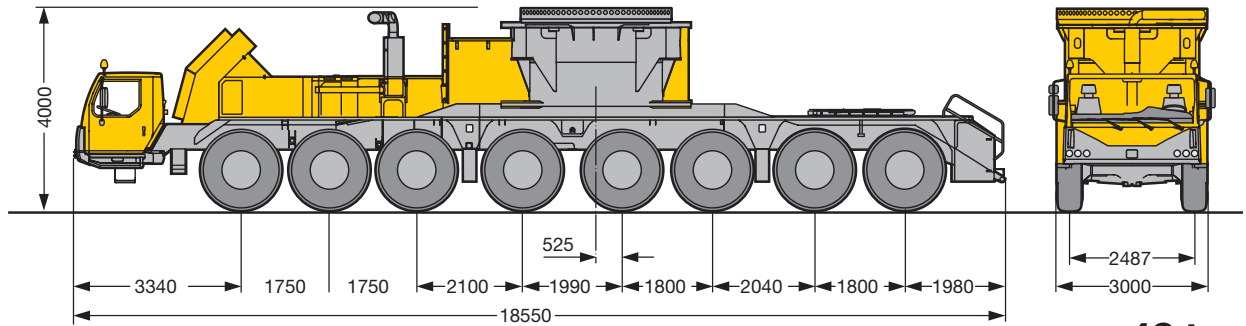
general information



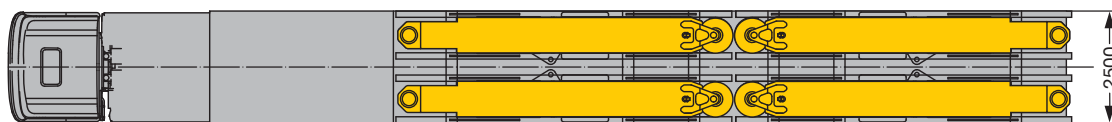
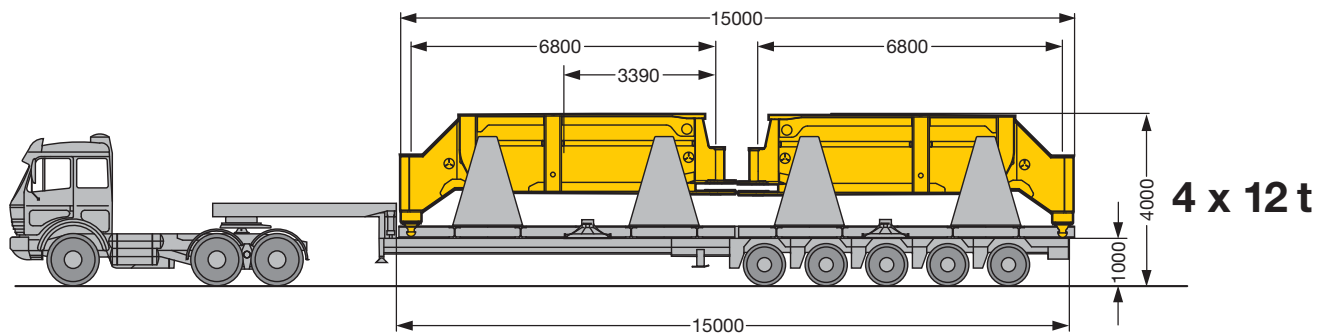
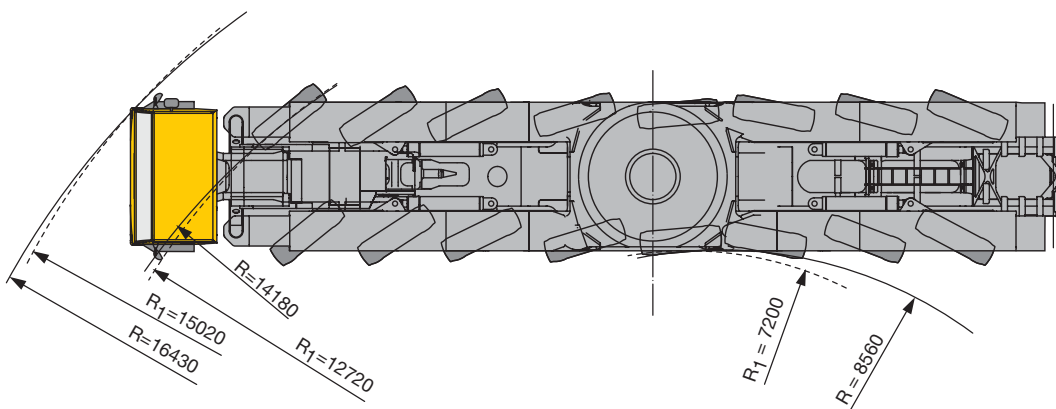
| Achse Axle Essieu | 1 | 2 | 3 | 4 | 5 | 6 | 7 | 8 | Gesamtgewicht t Total weight t Poids total t |
|-------------------------|----|----|----|----|----|----|----|----|----------------------------------------------------|
| t | 12 | 12 | 12 | 12 | 12 | 12 | 12 | 12 | 96 |

LIEBHERR

Dimensions LG 1750



ca. 48 t



S1326

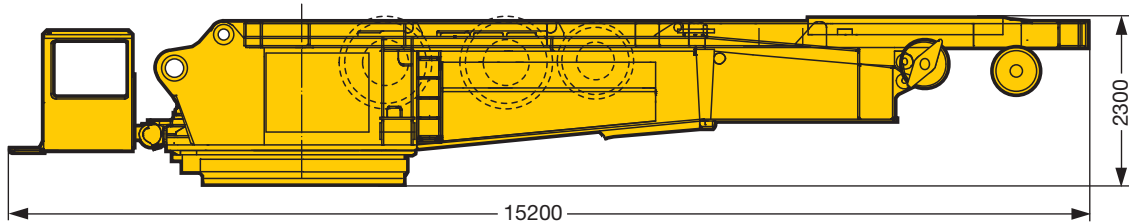


| Achse Axle Essieu t | 1 | 2 | 3 | 4 | 5 | 6 | 7 | 8 | Gesamtgewicht t Total weight t Poids total t |
|------------------------------|-----|-----|-----|-----|-----|-----|-----|-----|----------------------------------------------------|
| | 6,5 | 6,5 | 6,5 | 6,5 | 5,5 | 5,5 | 5,5 | 5,5 | 48 |

Transportation plan LG 1750

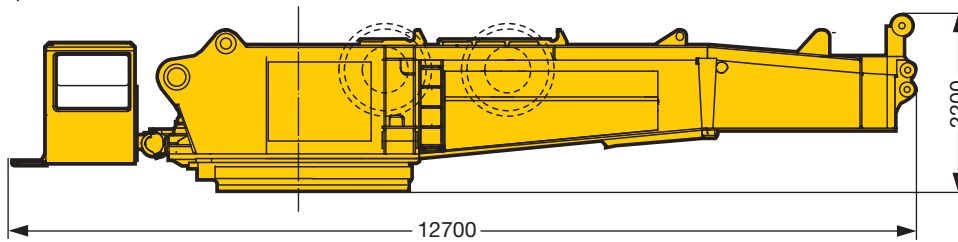
Drehbühne mit SA-Bock, Winde 4, Quick Connection, 2 Drehwerken
 Superstructure with SA-frame, winch 4, quick connection, 2 slewing gears
 Partie tournante avec chevalet SA, treuil 4, quick connection, 2 orientations

58 t



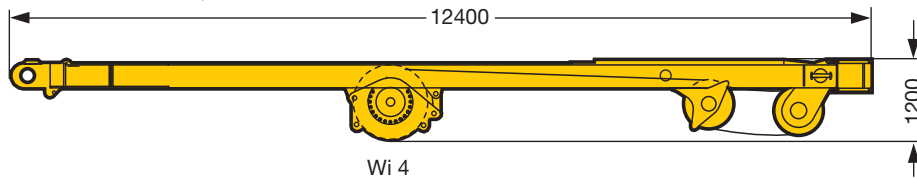
Drehbühne mit Quick Connection
 Superstructure with quick connection
 Partie tournante avec quick connection

38 t



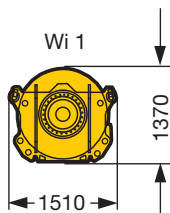
SA-Bock, Winde 4 inkl. Seil und Rollensatz
 SA-frame, winch 4 incl. rope and pulley block
 Chevalet SA, treuil 4 incl. câble et bloc de poulies

18 t



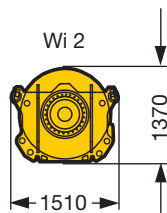
Winde 1 inkl. Seil
 Winch 1 incl. rope
 Treuil 1 incl. câble

8,7 t



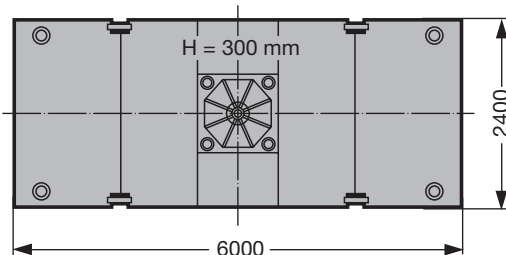
Winde 2 inkl. Seil
 Winch 2 incl. rope
 Treuil 2 incl. câble

8,7 t



Matratze
 Crane mat
 Mat

7,8 t



QC = Quick Connection
 Wi = Winde/winch/treuil

S1334

